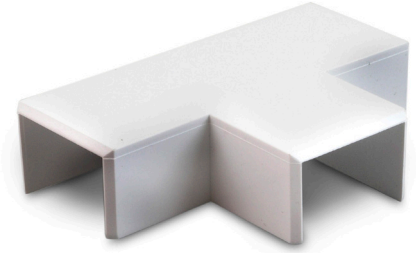


Data sheet

Part No. **ST WH**
 Description flat tee
 Colour white, similar to RAL 9010



Standard: EN 50085, BS 4678 Part 4



Working temperature
 -5 to +60°C

Material
 PVC-U

Art. no.	Height x Width	PU	PU
004 971 ST 16/16-16/16 WH	16 x 16 mm	10 pc	400 pc
004 972 ST 16/40-16/40 WH	16 x 40 mm	10 pc	320 pc
004 973 ST 25/40-25/40 WH	25 x 40 mm	5 pc	160 pc
004 974 ST 16/25-16/25 WH	16 x 25 mm	10 pc	320 pc
004 975 ST 16/25-16/16 WH	16 x 25 mm	10 pc	300 pc
023 006 ST 40/40-40/40 WH	40 x 40 mm	5 pc	120 pc
023 611 ST 40/60-40/60 WH	40 x 60 mm	24 pc	-

