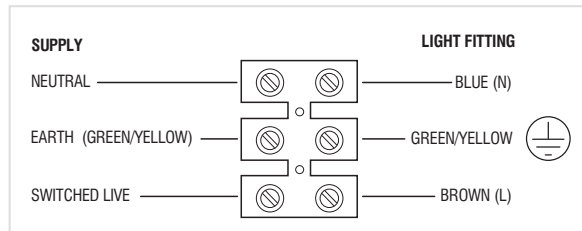


Wiring

Having correctly identified the wiring from your existing light fitting, pull the mains wire through the hole and connect to the quick fit connection block inside the product in the following way:



Check that...

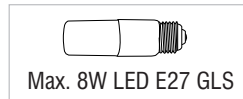
- You have correctly identified the wires.
- The connections are tight.
- No loose strands have been left out of the connection block.

Fitting/Replacing Bulbs

Always use the correct type and wattage bulb. Do not exceed the wattage stated or use a different shape bulb from that indicated on the fitting.

When changing a bulb, always switch off at the mains and allow the old bulb to cool down before handling. The entire unit gets hot whilst on for a period of time.

Dispose of used bulbs carefully and responsibly.



Technical data

Supply Voltage: 220-240 V~, 50 Hz | Bulb Type: Max. 8W LED E27 GLS (required)



Conformity with all relevant UKCA Directive requirements.



Conformity with all relevant EC Directive requirements.



This is a Class 1 product and must be earthed.



Waste electrical products should not be disposed of with household waste. Please recycle where facilities exist. Check with your Local Authority or local store for recycling advice.



This product is suitable for dimming.



This product is rated at IP44.

Care and Safety

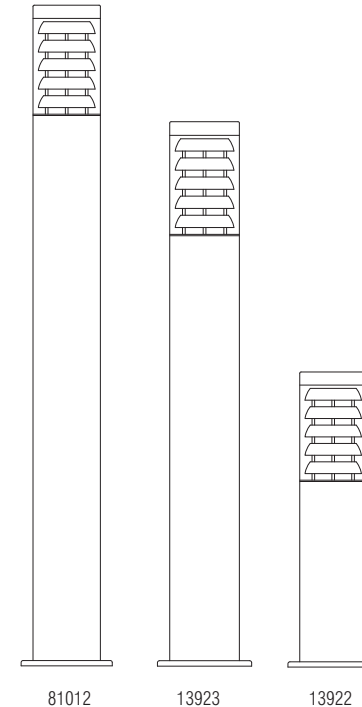
We recommend cleaning with a soft dry cloth. Do not use solvents or abrasive cleaners as these could damage the finish.

For your safety, always switch off the power supply before changing lightbulbs, or cleaning.

Instruction manual

Tango

13922, 13923, 81012



V8 11/11/2024

UK Manufacturer: BH17 7BY
EU Manufacturer: Brilliant AG,
Brilliantstrasse 1, D-27442 Gnarrenburg

saxby
lighting

www.saxbylighting.com

saxby
lighting

Thank you for purchasing this light fitting. Please read the instructions carefully before use to ensure safe and satisfactory operation of this product. Please retain these instructions for future reference.

Warning

This is a Class 1 product and must be earthed.

Please read these instructions carefully before commencing any work.

This unit must be fitted by a competent and qualified electrician.

Install in accordance with the IEE Wiring regulations and current Building Regulations.

Check the pack and make sure you have all the parts listed.

To prevent electrocution switch off at the mains supply before installing or maintaining this fitting. Ensure other persons cannot restore the electrical supply without your knowledge.

If you any doubt please consult a qualified electrician.

If replacing an existing fitting, make a careful note of the connections.

This product is not suitable for location in or near a marine or sea environment.

Waste electrical products should not be disposed of with household waste. Please recycle where facilities exist. Check with your local authority or retailer for recycling advice.

Layout

This fitting must be mounted on either a concrete surface or a paving slab that has been concreted in position.

Plan the desired layout of these fittings carefully, ensuring the cables will reach the distances between each light fitting.

Avoid locating any cables in positions that would cause a hazard. Position cables and outdoor rated junction boxes (not supplied) away from areas where they may be at risk from being cut, trapped or damaged.

We recommend that you use H07RN-F specification cable (not supplied) which is an outdoor grade, rubber sheathed cable.

This must be carried out by a competent and qualified electrician.

The mains supply cable must have a minimum cross section area of 1.0mm².

Cables must be protected using suitable conduit or plastic trunking.

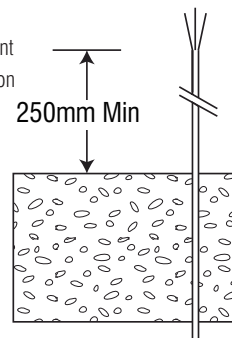
Installation

Existing fittings must be completely removed before installation of a new product. Before removing the existing fitting, carefully note the position of each set of wires.

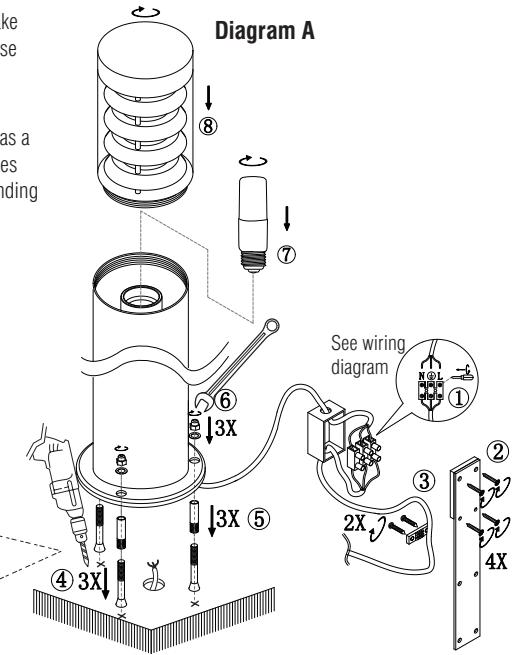
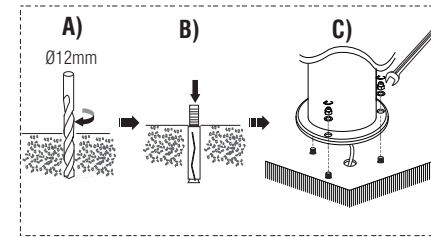
Note that the switch is turned off before installation.

Ensure that the screws and cable entry points are sealed to maintain the IP rating of the product.

As the diagram on the right. Determine the position of your light fitting. Ensure there is sufficient power cable to connect to the fitting - we recommend at least 250mm. Take a note of the position of the electrical connections. (This product must only be installed to a solid, fixed surface such as concrete, decking or paving slabs. It must **NOT** be installed on soil.)



- **Diagram A.** Pull the terminal block from inside of tube. Take the lid off the terminal block housing and connect the house wiring to the terminal block as the details wiring. Refit the lid and push the terminal block up into the tube.
- Place the base of the light fitting over the cable and use it as a template to mark the mounting hole positions. Drill the holes with electrodrill and plug the holes with the provided expanding bolt fixings ready to mount the fitting later.
- Fix the lamp body with the expansion screws kit supplied.
- Install the correct type and wattage bulb.
- Replace fuse or circuit breaker and switch on. Your light is now ready for use.



Installation with the root kit (81013)

- If you purchased the root kit 81013, please refer to the **Diagram B** to install the root kit.
- Wire as per the **Diagram A**.
- Prepare the hole for the root kit. The foundation should be a minimum of 200mm diameter with a minimum depth of 160mm.
- Pour cement into the hole, ensuring the cement is finished level and smooth.
- Ensure a suitable amount of supply cable is exposed so the fitting can be correctly wired after the foundation has been prepared.
- Insert the anchor bolts into the wet cement. Ensure the top plate is resting level on top of the cement with the threads exposed.
- After the cement has dried, Use the bolts to secure the base of light fitting to the anchor bolts.

Note: Following two sizes of triangle positioning frame are included in the root kit 81013. Please choose the correct size based on your product. Shorter frames **A** are use for Tango range: 13922, 13923, 81012. Longer frames **B** are use for Bliss range: 13799, 92531

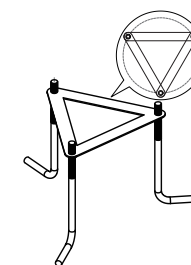
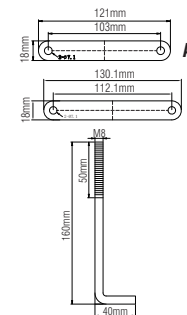


Diagram B

